

Abercrombie & Kent



## LA BELLE EPOQUE RIVER CRUISE

Visit one of the most beautiful villages in  
Burgundy

---

European Canal Barge Cruises, Cruises



Europe, France



7 days from AU\$9,728 pp



Private

## Journey Overview

La Belle Epoque is the perfect vessel to take you on a gentle voyage of discovery through a region studded with traditions and history that go back centuries. As she meanders along the Burgundy Canal with its undulating countryside, you will find that the towpath is always there for a spot of walking or cycling.

### Cruise Highlights

- Visit the Abbaye de Fontenay
- Private wine tasting of Chablis wines in the cellars of a renowned Domaine
- Private Champagne tasting at the boutique Maison Alexandre Bonnet
- Visit to famous battle site of Alesia
- Optional hot air ballooning
- Excellent towpath for walking and cycling
- “Biking Plus” option available



## Itinerary

### **Day 1: Venarey-les-Laumes**

Guests are met at our meeting point in central Paris\*\* and transferred by private chauffeured minibus to La Belle Epoque. A full crew Welcome Aboard with champagne and canapés. After time to settle into your cabin you will enjoy your first dinner on board and an introduction to Burgundy's excellent cuisine.

***La Belle Epoque | Meals: D***

### **Day 2: Venarey-les-Laumes to Montbard**

Enjoy a leisurely breakfast, then we cruise through woodlands and rolling fields with great towpath biking and walking opportunities past the tiny canalside villages of Nogent, Courcelles and Les Granges. After lunch, we enjoy either a stroll around the hilltop village of Flavigny-sur-Ozerain, where the film 'Chocolat' was set, or a tour of the medieval town of Semur-en-Auxois. On the way from the summit of Mount Auxois, we also look at Alesia, where the last battle between the Gauls and Romans took place in 52 B.C. and visit the impressive museum.

***La Belle Epoque | Meals: BLD***

### **Day 3: Montbard to Ravières**

Morning cruise with excellent towpath walking or cycling, passing the 18<sup>th</sup> century Forges de Buffon. Then after lunch we escort you to the exquisite UNESCO World Heritage Site of Abbaye de Fontenay founded by St Bernard in 1118. Representing a distinctive example of early Cistercian architecture and virtually intact, Fontenay allows an exceptional glimpse of Cistercian life and industry with its peaceful gardens, ponds and fascinating cloisters, dormitories and scriptorium. Return to the barge and cruise to Ravières.

***La Belle Epoque | Meals: BLD***

---

#### **Day 4: Ravières to Ancy-le-Franc**

A truly unique day lies ahead. Following breakfast aboard we head to Les Riceys, the only wine growing area of the Champagne region to have 3 *Appellation d'Origine Contrôlées*. Here we visit the Maison Alexandre Bonnet for a private champagne tasting, a family owned Champagne house renowned for a stunning yearly harvest of Pinot Noir that leads to some utterly exquisite vintages. After you've tasted an array of champagnes we take a short drive to Château de Ricey-Bas; with its 12<sup>th</sup> century vaulted cellars and thousand year history it's the ideal location to appreciate the rolling vineyards and enjoy a glimpse of family life in a rural château. Here we will be greeted for a Champagne aperitif and a gourmet lunch with the Baroness herself, which we take in either the private salon or the atmospheric vaulted 13<sup>th</sup> century kitchen. We will spend the remainder of the afternoon strolling the beautiful gardens or exploring the regal château interiors. Upon your return to the barge we'll begin our cruise to Ancy-le-Franc, with plenty of opportunity to walk or cycle along the towpath... or sit on deck with another glass of bubbly!

***La Belle Epoque | Meals: BLD***

#### **Day 5: Ancy-le-Franc to Lezennes**

This morning we visit Château d'Ancy-le-Franc. This beautifully symmetrical, 16th century masterpiece contains France's biggest collection of Renaissance murals and is set in magnificent gardens and parkland. In the afternoon, a gentle cruise as your hotel barge continues along the Burgundy Canal and descends through the picturesque locks to moor at Lezennes.

***La Belle Epoque | Meals: BLD***

#### **Day 6: Lezennes to Tanlay**

After breakfast we enjoy a leisurely cruise to our final mooring at Tanlay, with the opportunity to cycle or walk into the picturesque village of Saint Vinnemer. Following lunch, we tour the vineyards and town of Chablis, dating back to Roman times and enjoy a private wine tasting at a renowned winemaker such as the family-run Domaine Jean Marc Brocard, which makes the most of the region's wonderful local terroir to produce high quality wines, before returning to the barge for Captain's Farewell Dinner on board.

***La Belle Epoque | Meals: BLD***

#### **Day 7: Tanlay**

After breakfast, guests are transferred to Paris.

***La Belle Epoque | Meals: B***

## **Inclusions**

- Comfortable accommodation in air-conditioned, en suite staterooms or suites
- Gourmet meals prepared by the on-board chef, fine wines and an open bar
- Daily escorted excursions to places of interest and private wine tastings
- Local transfers, for example to and from Paris
- Bicycles and on most hotel barges, an on-deck spa pool
- Attentive service from an experienced crew – Captain, chef, tour guide and hosts/hostesses

# Map



## Accommodation

### La Belle Epoque



La Belle Epoque is a spacious, luxurious hotel barge and sister ship to L'Impressionniste. Although she originally carried logs from Burgundy to Paris, she was skilfully converted in the late 1990's into a delightful hotel barge.

She is now the perfect vessel for cruising the Burgundy Canal with its towpaths that are ideal for walking and cycling. She has been designed with both elegance and passenger comfort in mind and offers a sun deck with spa pool, wood-panelled saloon/dining room and other luxury amenities.

The spacious cabins offer a choice of twin or double beds with marble en suite facilities. The Captain leads a crew of six comprising Master Chef, Deck-Hand, Tour Guide and two Hostesses.

**Category:** Deluxe

**Cruise region:** Northern Burgundy

**Cruise Route:** Burgundy Canal

**Pickup location:** Paris

**Departures:** April - October

**Length of vessel:** 126 ft

**Crew:** 6

**Max Passenger Capacity:** 12



**Approx Cabin Size:** Jr. Suite 150-165 ft<sup>2</sup> & Staterooms 125-130 ft<sup>2</sup>

**Interior Decks:** 2

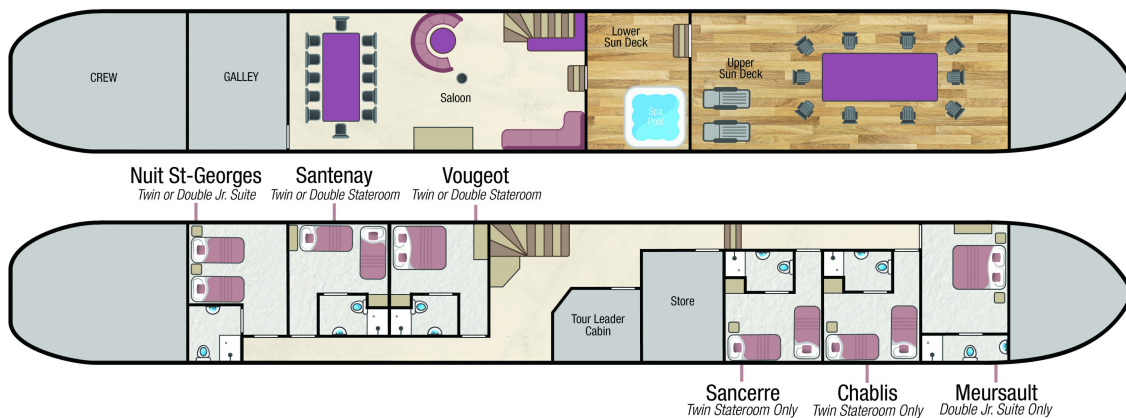
**TV/DVD Play in Cabin Saloon:** -

**Demo Gallery:** No

**Spa Pool:** Yes

**USB Ports:** Yes

**Themed Cruises:** Family, Walking, Golf, Wine Appreciation





## Dates & Pricing

La Belle Epoque is also available for whole barge charter for 8-12 passengers, from \$97,282.

Please call A&K on 1300 851 800, send us a **booking enquiry** to book this journey or contact your travel advisor.

# Abercrombie & Kent

**Call Us Now on  
1300 851 924  
within Australia**

Melbourne Office:

T: +61 (0)3 9536 1800

F: +61 (0) 3 9536 1805

E: [contact@abercrombiekent.com.au](mailto:contact@abercrombiekent.com.au)

Address

Level 26 (North Tower)

80 Collins St

Melbourne, VIC, 3000

International:

New Zealand Call: 0800 441 638

Asia Call: 800 4747 7700